

## R534 NoroGard batch treater

The NoroGard batch treaters are constructed to meet the demands for:

- ◆ Treatment quality
- ◆ Reliability
- ◆ User friendly
- ◆ Economy

The machines can be equipped to meet every customers need for dressing, incrustation, coating and pelleting of seeds more than 2 mm in diameter.

### 3 different control systems are available:

#### 1. Manual Batch treater.

The manual machines are as a standard without scale. Feeding is carried out manually. Also the discharge takes place by manually opening the discharge gate.

#### 2. Semi automatic controlled Batch treater (PLC assisted):

The semi automatic control system has the following features:

Scale: The size of the batch can be varied.

Mixing: The mixing time (in sec.) can be varied.

The opening time of the outlet-hatch is constant.

Dosage: The pumping time (in sec.) for the dosing pump can be set. The pump-capacity can be varied (peristaltic pump). Calibration is made by moving the dosage hose to a separate measuring glass. When the settings and calibrations are made, the machine run continuously.

#### 3. Fully automated control system:

Up to 99 recipes can be pre-programmed.

After choosing recipe and starting the machine, the control system automatically calibrate and watch the dosing rates for the liquids.

The system is based on building individual recipes.

In each recipe the following can be set:

The weight of each batch weighed into the machine

The total mixing time in sec.

The dosage for each liquid in ml (automatic calibration of pumps)

The dosage pace for each liquid

The dosage for each powder feeder in gram (calibration by weight).

The dosage pace for each powder feeder

The dosage-rates for the last batch are automatically converted to comply with the actual weight.

It is possible to connect the machine to a PC where all statistics can be monitored via an internet protocol for ex. Explorer.

The control system has build in modem that makes it possible for our service team to connect to the system for control and/or reprogramming.

The operators panel has both touch and button functions.



### Technical specification:

Power requirement: 3,37 Kw

Compressed air: 50 l/min @ 5.5 bar

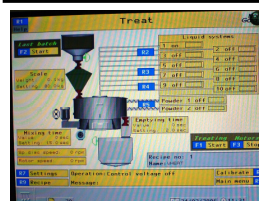
Air extraction: Up to 300 m<sup>3</sup>/h

Capacity (batch volume in litres): 1—20

Dimensions (mm):

	Width	Depth	Height
Manual machine	900	850	1105

Weight: 220 kg



Control panel with touch screen on the fully automatic control system.

## SEED TREATMENT